

SS

CLASS

S78





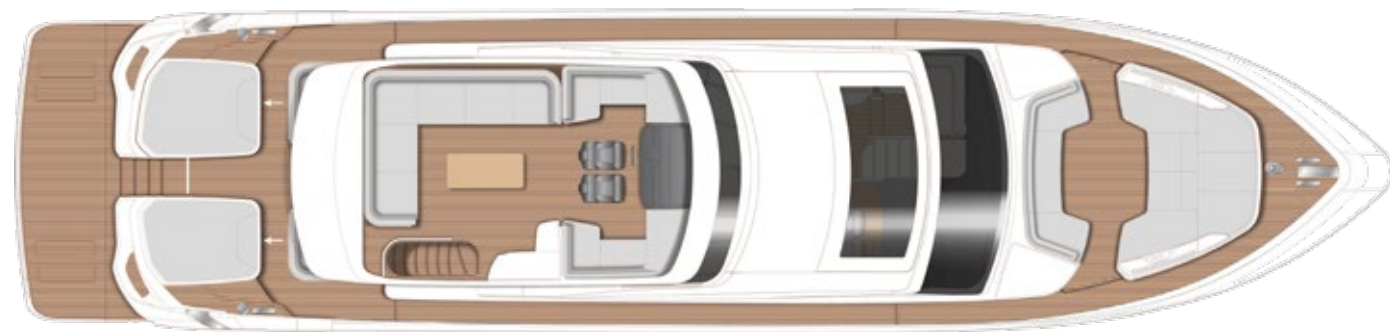
Distinctively cool whilst propelling you to an exhilarating 39 knots, the all-new S78 also captivates you with her versatility. Finished to high specifications throughout, her modular cockpit arrangement encourages flexibility for sociable moments, so whether you are dining or lounging you can arrange the seating to suit your needs. The informal arrangement of the saloon invites you to relax, where you can enjoy world class audio visual systems, designed and engineered in partnership with NAIM who continue to rewrite the audiophile rule book. Refined yet captivating, she's more than everything you would expect from the largest Princess S Class.

Jusque dans l'ivresse de pointes à 39 nœuds, le tout nouveau S78 maintient le cap et séduit par sa polyvalence et son agilité. Son cockpit modulaire, marqué par l'exigence des spécifications, encourage à la convivialité par sa flexibilité : que vous preniez le soleil ou vous retrouviez autour d'un repas, vous adaptez les sièges et banquettes aux besoins de l'instant. L'aménagement informel du salon invite à la détente, avec des équipements hifi de première classe, mis au point en partenariat avec NAIM, créateur de systèmes audiophiles qui réinventent constamment le monde de l'audiovisuel. Recherché, raffiné, captivant, le plus grand des Princess S Class dépasse toutes vos attentes.

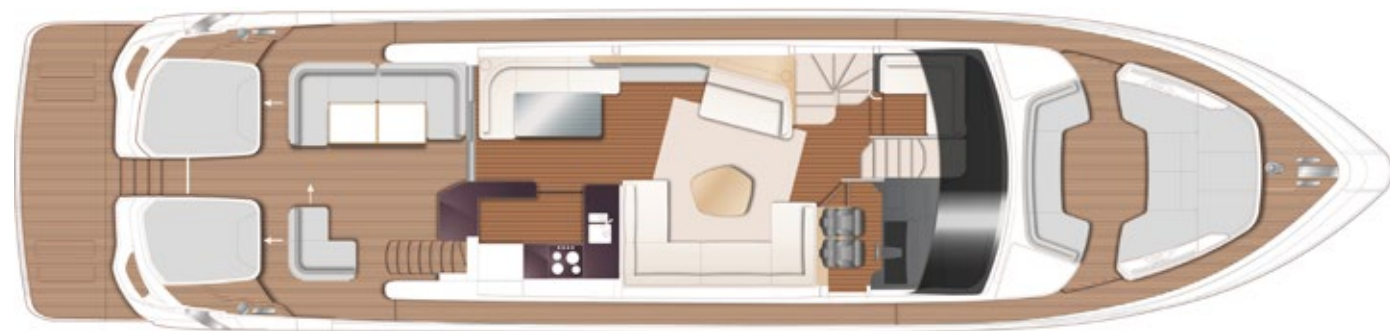
ز يخت إس 78 الجديد تماماً بالراقي والأناقة بينما ينطلق بسرعة فائقة تبلغ 39 عقدة، كما أنه يستحوذ على إعجابك لتعدد استخداماته. يحظى اليخت بمواصفات عالية حيث تتألف مقصورة القيادة من عدة وحدات، ما يتيح الكثير من المرونة لأغراض الفعاليات الاجتماعية، لذا سواء كنت تتناول الطعام أو تسترخي، يوسعك ترتيب المقاعد حسبما تشاء لتلبية احتياجاتك. كما أن التنسيق غير الرسمي لمنطقة الصالون يدعوك إلى الاسترخاء، حيث يمكنك الاستمتاع بالاستماع إلى نظام صوتي عالمي الطراز، تم تصميمه بالتعاون مع NAIM الشركة الرائدة في عالم الصوتيات. وبفضل ما له من رقي وجاذبية، يفوق اليخت كل توقعاتك باعتباره النموذج الأكبر في فئة البرينسيس إس.

La nuovissima S78 sa esattamente come mantenere la sua compostezza anche all'elettrizzante velocità di 39 nodi, e sa come conquistare i vostri cuori grazie alla sua versatilità. Rifinita in tutto e per tutto con specifiche elevate, la disposizione interna favorisce la flessibilità : sia per pranzare che per rilassarsi, i posti a sedere possono essere disposti per soddisfare al meglio le vostre esigenze. L'ampio salone invita a rilassarsi, godendo dei sofisticati e super tecnologici sistemi audio e video , ideati e progettati in collaborazione con NAIM, che continua a riscrivere le regole del gioco per gli audiofili più appassionati. Raffinata e seducente, la S78 offre molto più di quello che ci si potrebbe aspettare dalla più grande Princess della Classe S.

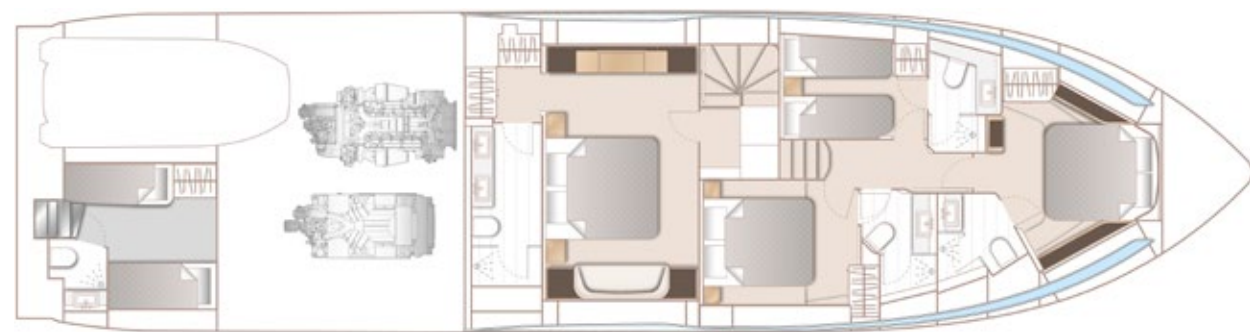
Новая Princess S78 по-настоящему универсальна: при высоком уровне комфорта она развивает скорость до 39 узлов. Все оснащение этой яхты соответствует высоким техническим стандартам. Кокпит легко трансформируется, что позволяет организовать обеденную зону или места для отдыха с максимальным удобством для ваших гостей. Вы можете расслабиться в непринужденной обстановке салона, где для вас установлена аудиовизуальная система мирового уровня Naim. Princess S78 — самая просторная яхта S-класса, сочетающая в себе утонченность и магнетизм.



SPORTBRIDGE



MAIN DECK



LOWER DECK

PRINCIPAL DIMENSIONS

Length overall (incl. pulpit)	80ft 11in (24.66m)
Length overall (excl. pulpit)	78ft 10in (24.03m)
Beam	18ft 11in (5.76m)
Draft	5ft 10in (1.77m)
Displacement	49,500kg (109,129lbs)
Fuel capacity	1320 gal/1585 US gal/6,000l
Water capacity (incl. calorifier)	297 gal/356 US gal/1,350l

DECK FITTINGS

- Teak-laid transom platform, cockpit deck, sportbridge, side decks and steps to side decks
- Reversible electric anchor winch with foredeck and helm position controls
- Self-stowing 50kg/110lbs Delta anchor with 100m of chain
- Foredeck seating and sunbathing area (sunbed converts to aft facing seating)
- Twin electric-powered sternline mooring winches
- Stainless steel cleats, fairleads and handrails
- Remote control searchlight
- Freshwater deck/anchor wash
- Storage lockers for rope, fenders and cushions
- LED deck level lighting

COCKPIT

- Configurable seating area with teak folding table
- Twin aft sunbeds with lazarette and garage with electro-hydraulic door and tender launch system with electric winch below (4.45m tender)
- Central transom gate leading to bathing platform with electro-hydraulic raise/lower teak mechanism, foldaway swimming ladder and hot and cold transom shower
- Lockable gas strut assisted hatch to engine room
- Transom access to crew cabin/engine room
- Lifteraft stowage lockers
- Remote control 3.6m telescopic passarelle
- 220/240v shore support inlet
- Rope storage lockers
- Cockpit cover

SPORTBRIDGE

- Helm position with raise/lower console, repeat navigation equipment including radar/chartplotter and engine instrumentation
- Large free standing seating area with table
- L-shaped seating to port and starboard (converts to sunpad)
- Wetbar with barbecue, sink and coolbox
- Audio system with waterproof speakers

LOWER HELM POSITION

- Twin helm seats with electric adjustment
- Helmsman's door to side deck
- L-shaped seat opposite helm area
- Full engine instrumentation including fuel gauges, exhaust temperature, fuel contamination alarms and rudder position indicator
- Navigation system including colour radar, GPS and chartplotter (twin displays), VHF/RT, speed and distance log, echo sounder with alarm, autopilot and high speed magnetic compass
- Controls for bow thrusters, windscreen wipers, bilge pump and trim tabs (with indicator)

- Chart table
- 24v and 240v control panel
- Red night lighting
- Toughened glass screen (clear for night vision)
- Remote control searchlight
- 12v outlet

DECK SALOON

- Stainless steel framed sliding door and electric powered aft window to cockpit
- U-shaped sofa and coffee table
- Two-seater sofa
- Entertainment centre incorporating 55" LED TV on electric raise/lower mechanism and DVD/Blu-ray and audio system
- Sideboard unit with bottle and glass storage and refrigerator
- Dining area with glass table
- Skylights with reflecto-glass and sliding blinds (option of powered opening roof)

GALLEY

- 4-zone induction hob
- Combination microwave/convection oven with grill
- Twin stainless steel sinks with mixer tap
- Full height refrigerator/deep freeze
- Icemaker
- Dishwasher
- Storage lockers, cupboards and drawers

ACCOMMODATION

- All cabins and bathrooms feature opening portholes and air conditioning outlets
- All cabins feature 220/240v power points
- All mattresses pocket sprung
- All bathrooms feature full shower stalls, electric freshwater toilets, extractor fan and 240v shaver points

OWNER'S STATEROOM

- Large double bed with drawers below
- Dressing area with wardrobes with hanging and drawer storage
- Dressing table with chair
- Sofa
- Built in safe
- 40" LED TV, DVD Blu-ray with audio system
- Overhead and individual berth lights
- En suite bathroom
- Dedicated access with lobby area

FORWARD GUEST CABIN

- Large double bed with drawers below
- Wardrobe with shelves
- Dressing table with stool
- Compact wireless audio system

ENGINE OPTION - DIESEL

Twin MAN V12 (2 x 1,900mhp)	Speed range: 37 - 39 knots*
-----------------------------	-----------------------------

- Deck hatch
- Overhead and individual berth lights
- En suite bathroom

PORT GUEST CABIN

- Two single beds with drawers below with optional powered sliding conversion to double
- Wardrobe with shelves
- Storage lockers
- Overhead and individual berth lights
- En suite bathroom

STARBOARD GUEST CABIN

- Large double bed with drawers below (with option of powered sliding berths)
- Wardrobe with shelves
- Dressing table with stool
- Overhead and individual berth lights
- En suite bathroom with day access

CREW CABIN

- Two single berths with storage below
- Wardrobe with shelf
- Storage lockers
- Overhead and individual berth lights
- Bathroom with electric freshwater toilet, washbasin and shower
- Access to engine room

INTERIOR FINISH

- Furniture in Rovere Oak with satin or high gloss finish. Walnut or Alba Oak available as an option
- Solid surface worktops and tiled floors in all guest bathrooms
- Granite/quartz worktops in galley
- Choice of high quality carpet and upholstery fabric from extensive range
- Curtains, blinds or sunscreens to all windows and portholes
- Timber-laid galley, saloon and helm floors

POWER AND DRIVE SYSTEMS

- 5-bladed propellers in nickel aluminium bronze
- Bow thruster (240kgf/529lbf)
- Power-assisted electro-hydraulic steering system with hydraulic back-up
- Electronic engine and gear shift controls
- Dripless shaft seals
- Engine room extractor fan with electronic time delay

ELECTRICAL SYSTEMS

- 24 Volt:
- 4 x heavy-duty batteries for engine starting
- 6 x heavy-duty auxiliary batteries
- 2 x 60-amp battery chargers charge both banks of batteries via an automatic switch charging system

- Remote battery master switches with control switch at main switch panel
- LED lighting throughout

220/240 Volt:

- 22.5kW diesel generator with own starting battery and specially silenced exhaust
- 2 x 63-amp shore support inlet
- Earth leakage safety trip
- Power points in all areas

FUEL SYSTEM

- Twin fuel tanks (in NS8 marine grade alloy) with interconnection system giving 1,320 gal/1,585 US gal/6000l capacity
- Fuel fillers on port and starboard side decks
- High-capacity duplex fuel filters/water traps
- Remote fuel cocks in cockpit locker

WATER SYSTEM

- 253 gal/304 US gal/1,150l plus 44 gal/53 US gal/200l hot water calorifier, heated by engines and 240v immersion heater
- Water level gauge
- Deck filler
- Electric freshwater WC system with 99 gal/119 US gal/450l holding tank

AIR CONDITIONING

- 149,000Btu chilled water system with outlets in all accommodation areas and incorporating reverse cycle heating with linked windscreen demist system. Suitable for tropical conditions (40°C)

FIRE EXTINGUISHERS

- Automatic/manual override fire extinguishers in engine room with warning system at both helm positions and incorporating engine air vent closure system
- Hand operated fire extinguishers in all cabins, galley and lower helm (7)

BILGE PUMPS

- Automatic electric bilge pumps (7)
- High-capacity manual bilge pump with valve system and suction points in same areas

OTHER STANDARD EQUIPMENT

- Set of cutlery, crockery and glasses (8)
- Set of towels (8 large, 8 small)
- Ensign staff
- Fenders (8) and warps (4)
- First aid kit
- Set of manuals

*Displacements are calculated with 50% fuel and water but with no optional equipment fitted or other gear or crew aboard. † Maximum speeds will vary depending on cleanliness of hull, condition of sterngear, loading of craft, water and air temperatures, sea conditions and other factors. Speed estimates are therefore given in good faith but without warranty or liability on the part of Princess Yachts Limited. Craft illustrated in this brochure may be fitted with certain optional equipment. Specifications may be changed at any time without notice or liability. USA Specification ‡ Princess yachts built for use in North America are certified by the National Marine Manufacturer's Association (NMMA) to comply with safety recommendations set forth by the American Boat and Yacht Council (ABYC) and with standards established by the United States Coast Guard Office of Boating Safety. In addition, certain other specifications, which vary by model, are upgraded on Princess yachts built for use in North America. Thus, specifications and equipment will vary from the information listed in the brochure for North American Princess yachts (e.g. air-conditioning and an upgraded generator will be included as standard for all North American models and electric cooking facilities will be supplied in place of gas systems). Please consult the USA Specification Brochure for full details regarding the North American specifications for individual models.

*Les déplacements sont calculés avec 50 % de carburant et d'eau, mais sans le montage d'équipements en option ou d'autre matériel et sans équipage à bord. † Les vitesses maximum varient en fonction de la propreté de la coque, de l'état du dispositif de propulsion, du chargement de l'embarcation, des températures de l'eau et de l'air, de l'état de la mer et d'autres facteurs. Par conséquent, les vitesses estimées sont indiquées de bonne foi mais sans garantie ni responsabilité de la part de Princess Yachts Limited. Les bateaux figurant dans cette brochure peuvent être équipés de certains équipements en option. Les spécifications peuvent être modifiées à tout moment sans préavis et sans engagement de notre part. Spécification pour les USA : ‡ Les yachts Princess construits pour être utilisés en Amérique du Nord sont certifiés par l'Association nationale des fabricants de l'industrie nautique (NMMA) comme étant conformes aux recommandations en matière de sécurité énoncées par le Conseil américain des bateaux et yachts de croisière (ABYC) et selon des normes définies par l'agence américaine des gardes-côtes et de la sécurité nautique. De plus, certaines autres spécifications, qui varient selon les modèles, sont optimisées sur les yachts Princess construits pour être utilisés en Amérique du Nord. Par conséquent, pour les yachts Princess destinés à l'Amérique du Nord, ces spécifications et équipements diffèrent des informations figurant dans la présente brochure (par ex. la climatisation et un générateur amélioré seront inclus de façon standard pour tous les modèles pour l'Amérique du Nord et des équipements électriques de cuisson seront fournis au lieu d'équipements fonctionnant au gaz). Veuillez consulter la brochure spécifiquement destinée aux USA pour tous les détails concernant les spécifications des différents modèles pour l'Amérique du Nord.

*تم حساب كميات السائل المزاج باستخدام 50% وقود وماء ولكن بدون معدات اختيارية مثبتة أو أجهزة أخرى أو طاقم على متن اليخت. † تختلف السرعات القصوى بناءً على نظافة الهيكل وحالة المروحة للسفينة وحمولة القارب ودرجات حرارة الماء والهواء وحالات البحر وغيرها من العوامل. من ثم، فإن تقديرات السرعة معطاة بنية حسنة ولكن دون ضمان أو مسؤولية من جانب شركة برنيسيس ياكنتس المحدودة. قد يُجهز القارب الموضح في هذه النشرة بمعدات اختيارية محددة. قد تتغير المواصفات في أي وقت دون إخطار أو مسؤولية. المواصفات الأمريكية ‡ يخوت برنيسيس المبنية للاستخدام في أمريكا الشمالية معتمدة من قبل الرابطة الوطنية للشركات المصنعة البحرية (NMMA) لتتفق مع توصيات السلامة التي ينص عليها المجلس الأمريكي للقوارب واليخوت (ABYC) ومع المعايير المقررة من مكتب حرس السواحل الأمريكي والمتعلقة بسلامة القوارب. بالإضافة إلى ذلك تتم ترقية مواصفات محددة أخرى، قد تختلف حسب الطراز، عند بناء يخوت برنيسيس للاستخدام في أمريكا الشمالية. وبالتالي، فالمواصفات والمعدات تختلف عن المعلومات الواردة في هذه النشرة بالنسبة ليخوت برنيسيس الأمريكية الشمالية (على سبيل المثال، سيتم تضمين تكييف الهواء والمولد الحديث كمعيار لجميع طرز أمريكا الشمالية وسيتم توفير مرافق الطهي الكهربائية بدلاً من أنظمة الغاز). فيرجى مراجعة نشرة المواصفات الأمريكية لمعرفة التفاصيل الكاملة المتعلقة بمواصفات أمريكا الشمالية بالنسبة للطراز الفردية.

* I pesi riportati nel presente catalogo si riferiscono a imbarcazioni con mezzo carico di carburante e di acqua ma non comprendono l'installazione di accessori opzionali o la presenza di equipaggio a bordo. † Le velocità riportate sono indicative e dipendono dal carico, dalla pulizia della carena, dalla perfetta efficienza degli apparati meccanici e dalle condizioni atmosferiche e di mare. Pertanto, le stime delle velocità sono fornite in buona fede ma senza alcuna garanzia o responsabilità da parte di Princess Yachts Limited. Sulle imbarcazioni illustrate in questo catalogo sono montati anche accessori e strumentazioni opzionali. I dati tecnici sono soggetti a modifiche in qualsiasi momento senza preavviso. Specifica per gli USA ‡ Gli yacht Princess destinati al mercato del Nord America sono certificati dall'Associazione che riunisce i produttori di imbarcazioni, motori marini e accessori del Nord America (NMMA) e sono conformi alle raccomandazioni in materia di sicurezza previsti dall'American Boat and Yacht Council (ABYC) e agli standard previsti dalla United States Coast Guard Office of Boating Safety. Inoltre, altre specifiche che variano da modello a modello, sono aggiornate sugli yacht Princess destinati al mercato del Nord America. Pertanto, specifiche e attrezzature possono differire dalle informazioni riportate nella brochure per gli yacht Princess destinati al Nord America (ad es., l'impianto di climatizzazione e un generatore aggiornato faranno parte della dotazione di serie di tutti i modelli destinati al mercato nordamericano, mentre in sostituzione degli impianti a gas verranno fornite attrezzature da cucina elettriche). Per conoscere tutti i dettagli relativi alle specifiche nordamericane per i singoli modelli, si prega di consultare la brochure specifica per il mercato USA.

*Водоизмещения вычисляются с учётом 50% запаса топлива и воды, но без учёта установленного и иного дополнительного оборудования и веса членов команды. † Максимальные скорости зависят от чистоты корпуса, состояния действующего устройства, загрузки судна, температур воды и воздуха, состояния моря и других факторов. Поэтому оценки скоростей произведены добросовестно, но без гарантий и ответственности со стороны Princess Yachts Limited. Любое судно, изображённое в данной брошюре, может быть оснащено дополнительным оборудованием. Спецификации могут быть изменены в любое время без уведомления и обязательств. Спецификация США ‡ Яхты Princess, построенные для эксплуатации в Северной Америке, сертифицированы Национальной Морской Ассоциацией Производителей (NMMA) с учётом рекомендаций по обеспечению безопасности, установленных Яхтенным Советом (ABYC), и соответствуют нормам, установленным Управлением Береговой Охраны Соединённых Штатов по Яхтенной Безопасности. Кроме того, некоторые характеристики, которые изменяются в моделях, будут обновлены на Princess Yachts, построенных для использования в Северной Америке. Таким образом, технические характеристики и оборудование могут отличаться от информации, представленной в данной брошюре для североамериканских яхт Princess (например, изменён генератор кондиционирования воздуха, и он будет включён в стандартную комплектацию для всех североамериканских моделей, электрическая плита поставляется вместо газовой). Пожалуйста, обратитесь к брошюре для США, чтобы получить полную информацию о североамериканской спецификации отдельных моделей.

S

CLASS



PRINCESS YACHTS

Newport Street, Plymouth, Devon, PL1 3QG, UK Tel: +44 (0) 1752 203 888

www.princessyachts.com info@princessyachts.com